

For their unconditional love...
They deserve reward so lavish!
Give them a dream-home...
They will forever cherish!



Fill Pride in those
Aging Wrinkles



Deepen those
Dreamy Dimples



Ignite those eyes with
Gratified Twinkles

*After all this is So Simple! Move into Lake Gardens...!
If You are envied, We bag your thousand pardons!*

PROMOTERS



Site Address: 1, Govardhan Vilas, opp. Goverdhan Sagar, N.H. 8, Udaipur
Head Office: Neptune Apartment, 170-A - New Fatehpura, near Sukhadia circle, Udaipur.
Phone: Mob- 9983311311, 8058582858, Off - 0294 - 2483185, Fax - 0294 - 2482108
Web: www.shreestambh.com | **email :** info@shreestambh.com

BUSINESS ASSOCIATES

Sagar Propcon. Pvt. Ltd. | Aravali Onyx Gourp | Saheb Build Estate
Savina Ph.: 0294- 2487602 Udaipur, Rajasthan Udaipur, Rajasthan

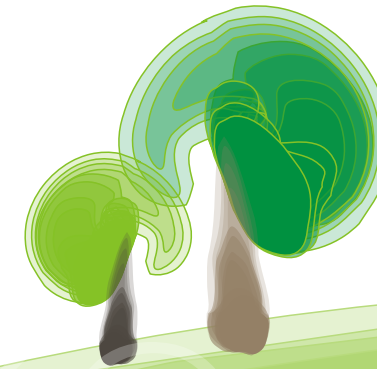
ARCHITECTS

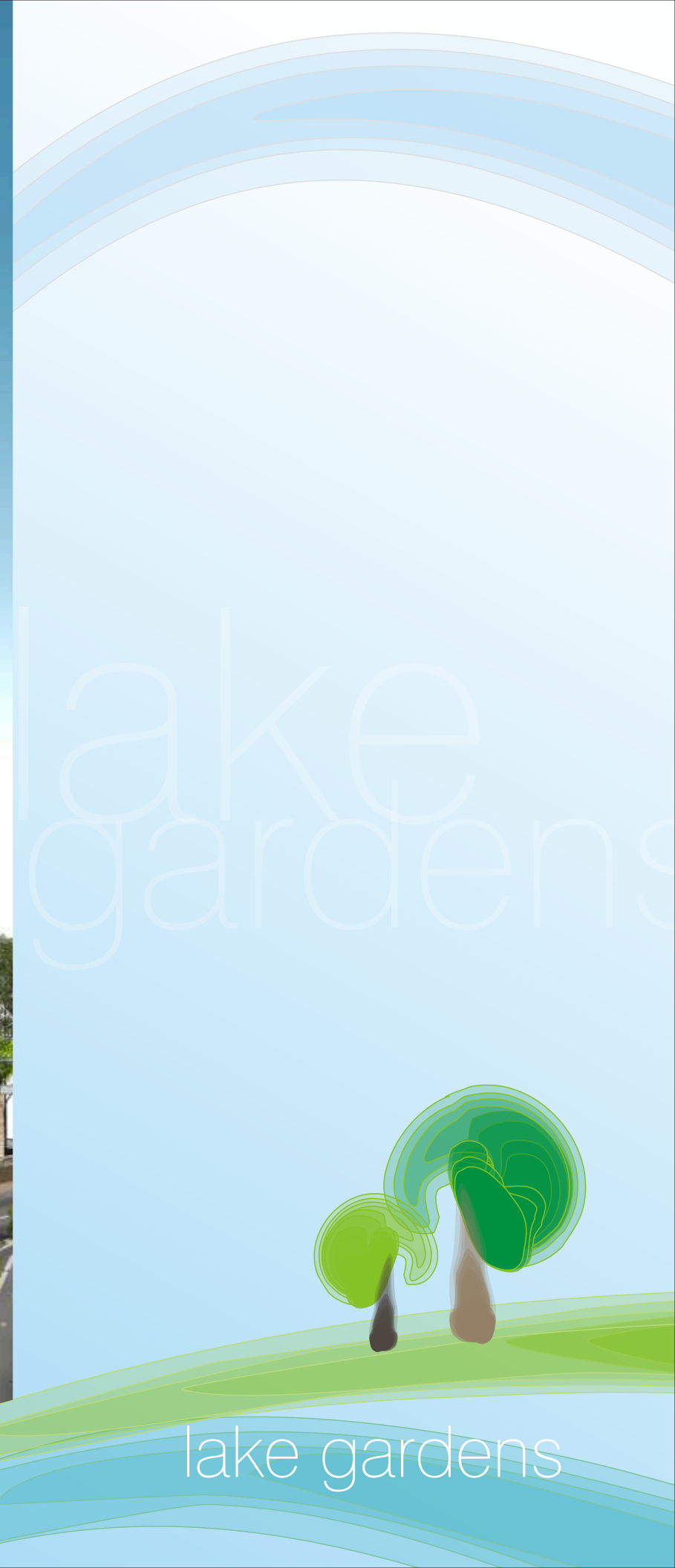
Agrawal & Agrawal
Vadodara - Kolkata

STRUCTURAL ENGINEERS

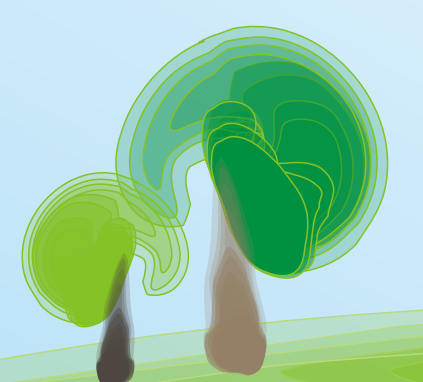
Dr. I.I. Pandya, Pandya Associates
Vadodara

lake gardens





lake
gardens



lake gardens

lake gardens

'Where life blossoms'!

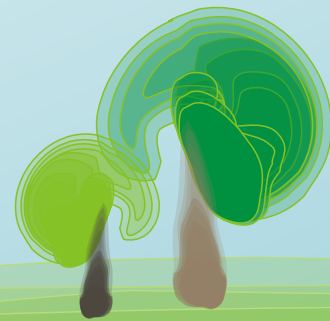
A place you would love to live and bloom. A luxury condominium lifestyle with a sparkling lake, forming a perfect backdrop. A home in harmony with nature. Meticulously designed 300 plus luxury apartments, overlooking 50,000 Sq.ft. of your own exotic greens. Each house having its ample share of space without lending a clustered beehive facade.

Lake Gardens consists of 9 multistory towers of luxury homes with 180 degree of eastern horizon spread over a land space of about 2 lacs Sq.ft. built with the involvement of renowned-expert architects, structural engineers, landscape designers, environmental consultants and electrical consultants – whose specifications translated into final product, meet stringent quality standards.

To offer a wholesome lifestyle environment we have incorporated the residential with the recreational in form of "The Club" with modern facilities and comforts. It is a perfect place for sports, conversations, lounging and bonding. It enhances the opportunity for man to man interaction and man to nature interface. People oriented touches are lent and ample greenery is conceived to keep in tune with nature.

Swimming-pool to shed those extra baggage of fatigue, fat and frustrations and of course for fun-dips. Well equipped Gymnasium for the fitness freaks and to get your body sculpted. Spa to relax & rejuvenate after those ruthlessly rigorous regimes. Pamper yourself and say goodbye to stress. You deserve this indulgence. Library for all age- groups in serenity with 'Sense and Sensibility' at its best. Home theater, Billiards – pool room, Chess – card room, T.T.Room, Conference cum recreation Hall, Crèche, fun pool, outdoor arena for Tennis – badminton – volleyball.

Aspirations you had, for the ultimate lifestyle with utmost sophistication, refinement and class is at your doorstep. Our bottom-line is: Healthy surroundings means - healthier people and happier life!



Just the kind of place you would admire in foreign glossies and dream to own – now a reality!

Udaipur

'Venice of east'!

Udaipur – Also known as the 'City of dawn', 'Venice of east' & 'The lake city' is famed for its kaleidoscopic natural beauty and the permanent splendor that is easily arresting! Fringed by lush green Aravali Mountains and dotted with historical grandeur, Royal radiance, exquisitely laid gardens and Sparkling Azure Lakes! Udaipur is a city – literally dripping with colors, beauty and romance!

Udaipur is a treat to all the senses with its splendid sites and sounds, exciting experiences & echoes of enchanting & valiant past. It evokes insightful inspiration & innovative imaginations. It has been muse to many poets, artists, sculptors and creative geniuses since centuries!

Udaipur is voted "The World's Best City" for travellers in 2009 in an online poll by internationally acclaimed magazine – 'Travel + Leisure', trumping last year's winner Bangkok!

'Lonely Planet' says: "Udaipur is definitely one of the most beautiful city in the world!"

City palace



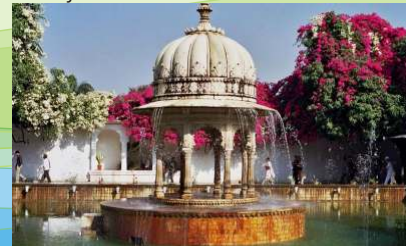
Fateh sagar lake



Hotel Lake palace



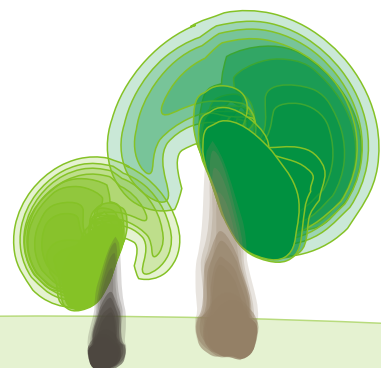
Saheliyo Ki Badi



Uday Vilas Hotel

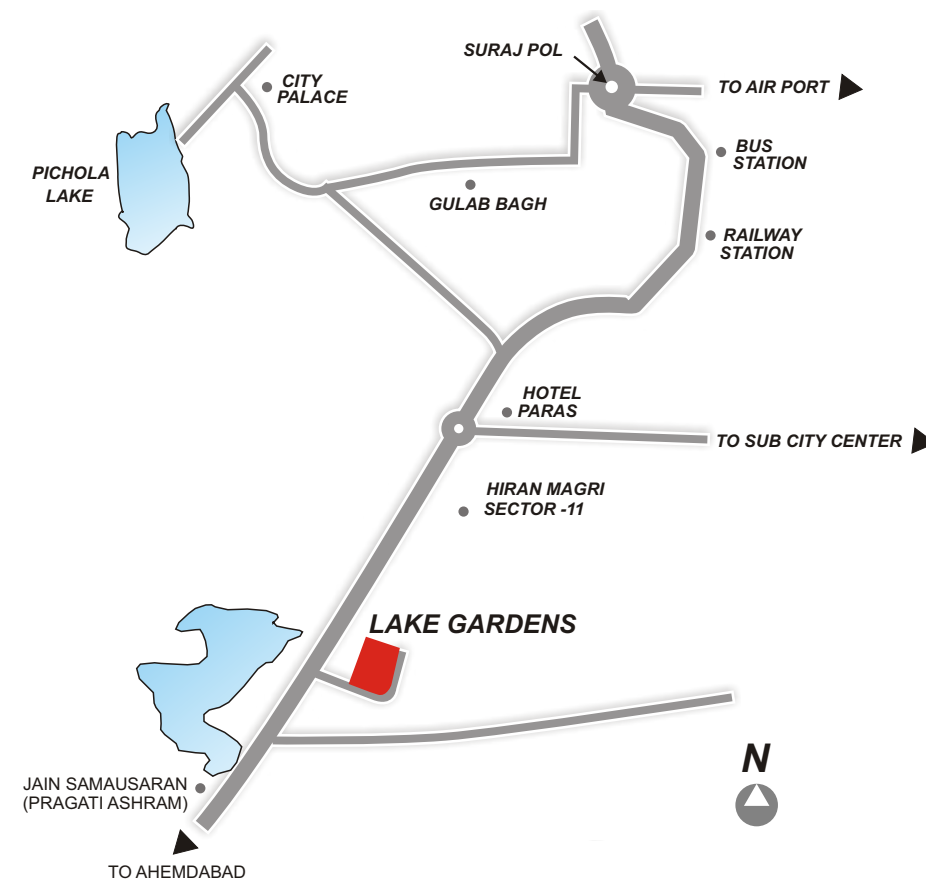


lake garden



Location

'Plush & Prestigious Address'!

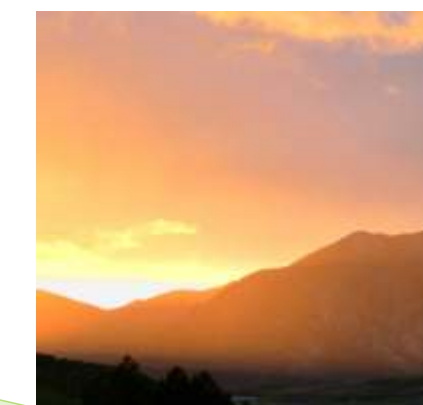
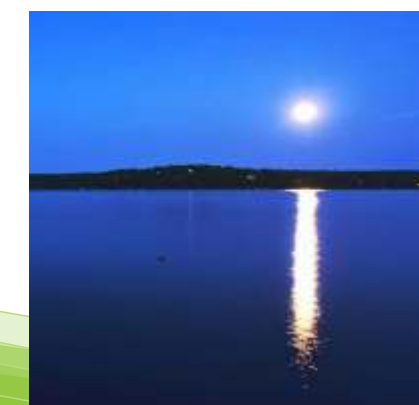
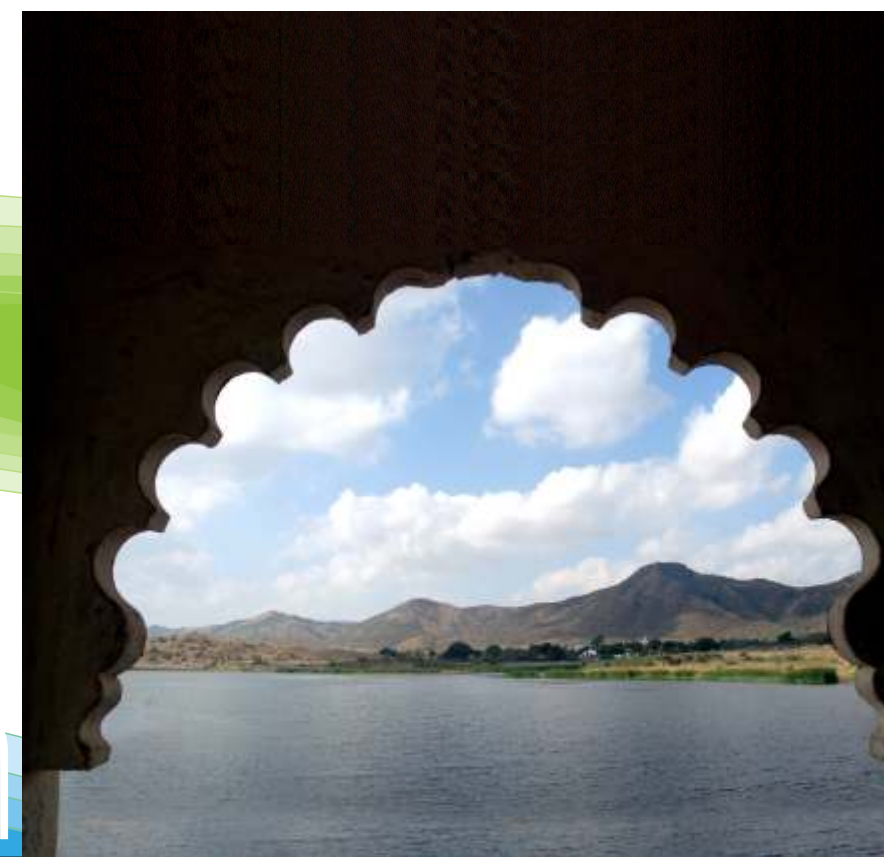


- Opposite Govardhan Sagar Lake, at NH – 8, Ahmedabad Highway Road.
- Just 2 K.M. from Railway station, 3 K.M. from Bus station & 20 min. drive to Airport.
- In proximity with best schools and Hospitals.
- A minute's drive to Shikaradi and Indra Regency 5-star Hotels.
- IIM campus (proposed) at just 4 K.M.
- 1 K.M. from Jain Samausaran (Pragati Ashram)

Breathtaking view from the lake facing windows gives you enough scope to absorb the ever-changing reflection in lake – umpteen shades of green and myriad hues of blues! Be a spectator of 'The aquamarine lake waters romancing the emerald of Aravali range! Drink with your eyes – The exotic opulence of the golden gossamer woven by the sun on the lake surface during the day and the shimmering silver brocade by the moon-beams at night!

Check out a bird – skimming the lake to quench its thirst or scaling the expanse of horizon! Capture the magic of quick-vanishing cloud gondolas at its Venetian best in the tranquil waters from your own balcony at Lake Gardens! Venice of East indeed!

Location of Lake Gardens promises the pride of possessing the "Plush & Prestigious address"!



Architects with pizzazz

“Space is more than the square feet”!

Lake Gardens has been designed by Architects Agrawal & Agrawal – India's leading architect, lead by Mr. J.P. Agrawal, Mr. Vijay Agrawal & Mrs. Monal Agrawal, who sought a dream that encompassed life. “Architecture is about life, the implications as landmarks simply follow”- they believe!

Well, what has followed from their philosophy is a series of marvels. After creating four-million-square-foot residences, three-million-square-foot corporate parks, two-million square-foot mall and 500 plus landmarks across a period of two decades and ten cities in India, they still value spaces as springboards of life; not measurable just in square feet!

They crave to create architectural marvels with innovative designs, latest technological inputs, advanced material, excellent execution and challenging their own abilities to outperform their accolades of past.

Testimonies include architectural splendors like Infinity & Technopolis - Technology parks, Silver Spring & Space Circle - Residential apartments at Kolkata, Seven Seas - Mall & Multiplex at Vadodara, Raj Aangan - NRI Township at Jaipur are few among many more prestigious projects strewn across the country.

Architect J. P. Agrawal – a man of discernment & connoisseur of good taste is honored Among the 'Top 15 Architects from India, who contributed to shape modern Indian Architecture in recent years' by one of its kind publication: “GOLDEN HANDS – THE POWER OF ARCHITECTURE”, published by White Flag Media Ltd, Mumbai in 2009.

Ekta Towers



Gurusaday Apartments



Infinity Benchmark



Silverspring



Technopolis



Promoters

‘glittering spectrum of Quality Projects’!

Lake Gardens is brought to you by 'Shree Stambh Colonizers' - the promoters of Prestigious Buildings like Shree Stambha, Neptune, Madhav Chambers & Silver Nest.

The reputation enjoyed by the promoters is earned due to their glittering spectrum of Quality Projects, Financial Soundness, Timely Delivery, Ethical Practices, Responsible Pricing – an excellent Price-Value Proposition, Legally Clean Property & Immaculate Construction Quality. This Spectrum of their renowned Credibility is reflected in their magnificent previous projects:

- Shree Stambha – Ambamata
- Neptune Tower – Sukhadia Circle
- Madhav Chambers – Chetak Circle
- Silver Nest Apart. – Fatehpura

The Promoters of Lake Gardens have always followed two parallel paths.

1. To promote excellent Real estate.
2. Be Responsible trustees of Public Interest.

As trustees they aspire to bring security, Value-appreciation & esteem to buyer's hard earned and tough saved money. Not half measures but 'heaped measures' is their policy... that goes a long way! All these esteemed endeavors epitomize the ethics and essence of their trade.

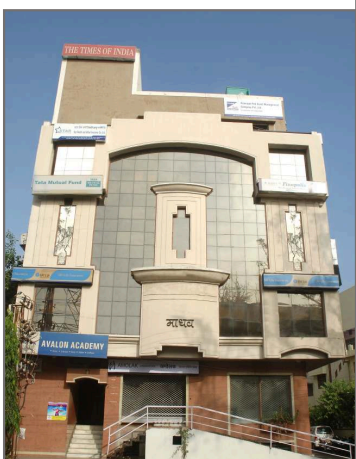
The previous gems studded by the developers, lend dazzle to this city – known as 'Venice of East'. 'Lake Gardens' is one more sparkling gem being added to the city of Udaipur'.



Neptune Tower - Sukhadia circle



Shree Stambha
Ambamata



Madhav Chambers
Chetak Circle

lake gardens

Sound Investment

'Value of your hard-earned money'!

comfort
peace
contentment
security
confidence



Lake Gardens possesses all the attributes of a Sound property investment - pedigree, position, protection and presentability.

First its pedigree. Lake Gardens is a venture by promoters of credibility: The private sector promoters of prestigious Shree Stambh Apartments, Neptune Apartments, Madhav Towers & Silver Nest Apartments. As a result of this impeccable background, you are assured of a clean property – free from any encumbrances. An investment which will protect the value of your hard-earned money. Promoter's real estate expertise will justify every rupee spent on it.

As a result, property at Lake Gardens promises to be a much-appreciated investment in more senses than one:

- Upgrading & redefining lifestyle is an investment in health – in form of physical fitness and confident attitude!
- Keeping in mind to enhance the natural flow of energy – so that the space saves on resources and is environmentally responsible!



The Club 'High brow culture'!

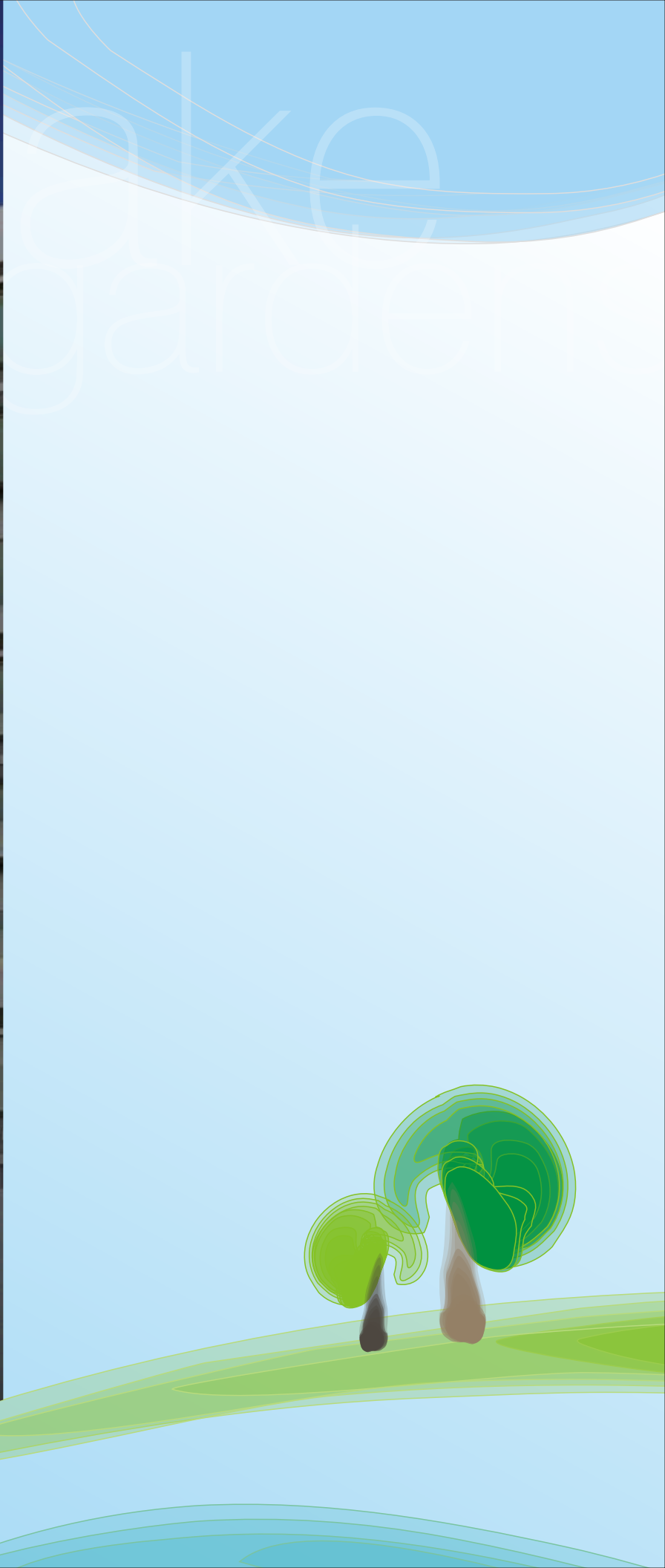
By providing this multipurpose recreation centre, the promoters have put Lake Gardens at par with high brow culture. It promises to enhance physical health, mental soundness and social interaction.

With its exciting features, high-tech equipments and fun-filled environment, The Club will be the focal point of Lake Gardens. It will be conducive to the feeling of openness & bonding, so there is no unwarranted sense of seclusion and everyone can be in touch without interfering in one's own space & privacy. You will look forward to the delightful dose of exercises at daybreak , exciting evening sessions and lazy afternoons for home makers & seniors. It is relevant to every member in the family. Be prepared to add more zing in your life:

- Sumptuous Swimming Pool - inviting you to take a plunge of pleasure in its pristine profusion.
- Tennis- badminton- volleyball Court for those tough - on your toes sessions to sweat out in style.

The Club amenities include:

- State-of-art Swimming pool.
- Safe & Secure Fun pool for kids.
- High-tech Health Club with gym, steam-sauna, Jacuzzi and much more.
- Billiards – Pool – T.T. room for indoor activities.
- Chess – Card room for those brain stimulating sessions.
- Conference cum Recreation Hall for meetings, greetings & celebrations.
- Home Theatre for exclusive audio-visual entertainment.
- Crèche – an escape from confinement of cradles.
- Library to quench the thirst of book-worms.
- Out-door Arena for those fascinating games of Tennis, Badminton & Volleyball.





Ground Floor Plan

Block A

FLAT NO.	S.B.A. (SQ.FT.)
101 TO 801	2026.99
102 TO 802	2250.10
103 TO 803	2109.21
104 TO 804	1619.56



FLAT NO.	S.B.A. (SQ.FT.)
101 TO 801	2025.71
102 TO 802	2055.55
103 TO 803	2078.23
104 TO 804	1595.24



Block B

lake gardens

Block C

FLAT NO.	S.B.A. (SQ.FT.)
101 TO 801	2024.50
102 TO 802	2052.00
103 TO 803	2078.29
104 TO 804	1615.05



Block D

FLAT NO.	S.B.A. (SQ.FT.)
101 TO 801	2013.63
102 TO 802	2263.40
103 TO 803	2086.53
104 TO 804	1600.03

Block E

FLAT NO.	S.B.A. (SQ.FT.)
101 TO 801	1892.73
102 TO 802	1885.25
103 TO 803	1343.02
104 TO 804	734.47
105 TO 805	735.07
106 TO 806	1350.47



Block F

FLAT NO.	S.B.A. (SQ.FT.)
101 TO 801	2031.60
102 TO 802	2060.60
103 TO 803	1622.97
104 TO 804	1607.57



1607.57 sq.ft.



1584.48 sq.ft.

2072.79 sq.ft.

2022.15 sq.ft.

2052.90 sq.ft.

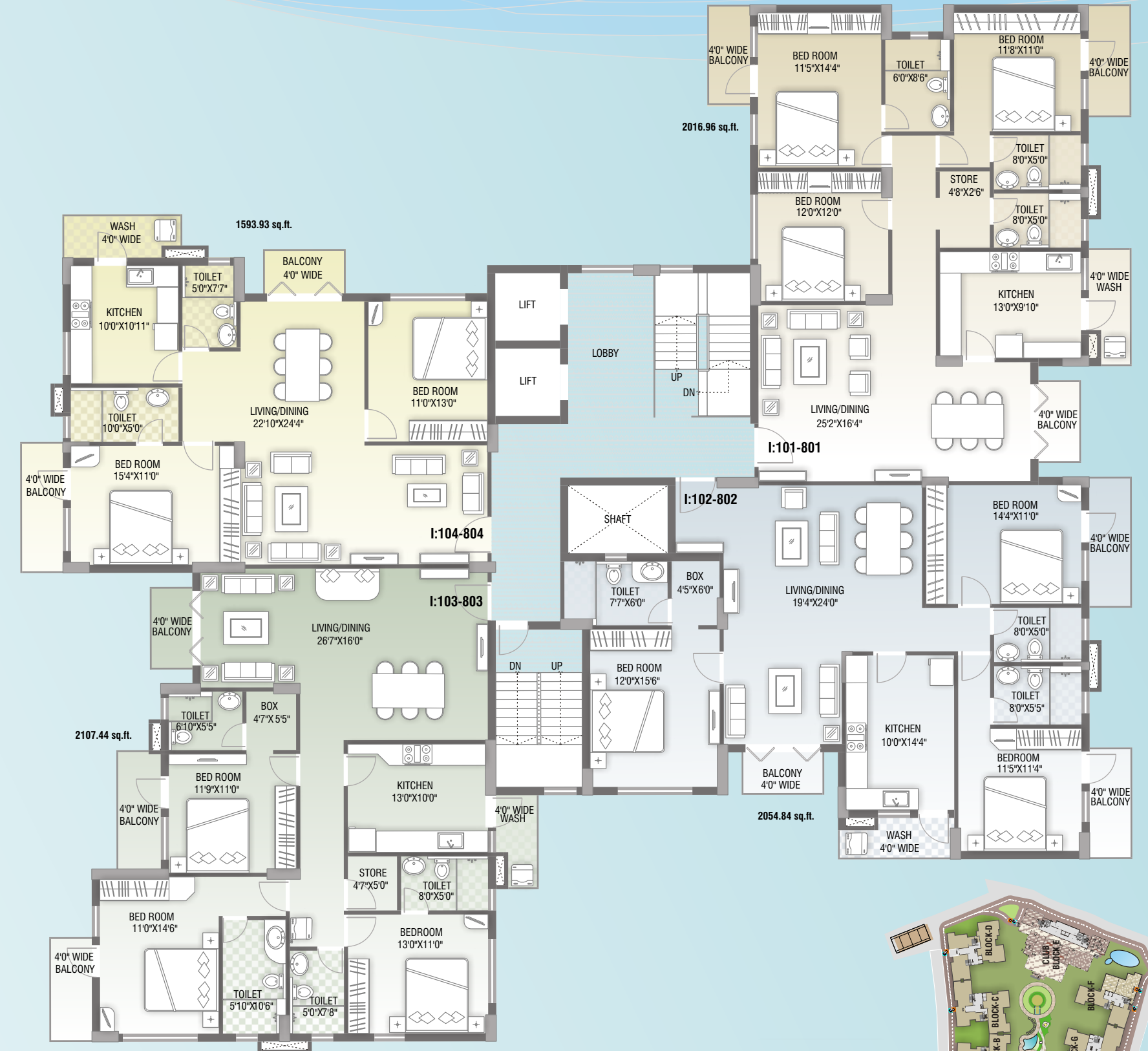
Block G

FLAT NO.	S.B.A. (SQ.FT.)
101 TO 801	2022.15
102 TO 802	2052.90
103 TO 803	2072.79
104 TO 804	1584.48



Block H

FLAT NO.	S.B.A. (SQ.FT.)
101 TO 801	2018.92
102 TO 802	2026.71
103 TO 803	2082.99
104 TO 804	1609.97



FLAT NO.	S.B.A. (SQ.FT.)
101 TO 801	2016.96
102 TO 802	2054.84
103 TO 803	2107.44
104 TO 804	1593.99

Block I

Specifications

- Water Supply:** 24 hour water supply from an in-complex deep tube well.
- Electricals:**
 - Provision for adequate light points in consultation with professional interior designers.
 - Modular switches from Anchor or equivalent
 - Adequate power points for the installation of modern gadgets in every room.
 - Concealed wiring for electricity of Finolex or equivalent brand.
 - Sufficient telephone and television points.
 - Provision for air-conditioning in all bedrooms.
- Common Lighting:** Overhead illumination for compound and street lighting inside the complex.
- Walls:** Conventional brick work of 9" and 4.5" thickness with cement plaster.
- Wall finish:**
 - Interior – putti / plaster of Paris.
 - Exterior – Superior quality, Long lasting exterior paint of reputed brand.
- Flooring:**
 - Good quality Vitrified Tiles.
 - Kitchen / Toilet floors to be laid with Ceramic Tiles / Indian Marble.
- Kitchen:**
 - Modular kitchen with kitchen platform clad with Granite.
 - Dado of Ceramic tiles above platform of 4' 6" height.
 - Stainless Steel Sink.
 - Provision for Water Purifier.
 - Provision of Piped Gas from compound to kitchen.
- Toilet:**
 - Standard quality Ceramic Tiles up to 7' height.
 - Sanitary ware of Hindustan / Parryware / Cera or equivalent brand.
 - CP fittings of standard superior brands like Jaguar or equivalent.
- Doors:**
 - Door Frame made of seasoned and treated Sal or equivalent class.
 - Flush Doors of 32 mm shutter with good quality paint.
 - Brass or Stainless Steel locks & fittings.
 - Main Door frame and Shutter made of Teakwood with melamine polish.
- Windows:**
 - Fully Glazed Wooden or Aluminum windows
 - Brass / Stainless Steel fittings.
 - Integrated Grills.



amenities

- Ground Lobby:** Elegant and Specious Lobby on the ground floor in every tower.
- Lift:** Two Automatic Lifts per block of Otis or equivalent brand, servicing every floor each tower.
- Car Parking:** Provision of member's reserved Car Parking as well as Visitor's Car Parking.
- Security:** High-tech Security with Video Door Phone in all the apartments. 24 hours Security at the main entrance.
- Generator:** Standby Generator for common areas and common services.
- Communication:**
 - Provision for Cable TV and master antenna.
 - Telephone lines of Reliance or equivalent including Broadband connectivity for internet and allied services.
- Safety against Fire:** State-of art fire-fighting equipment and extinguisher.

facilities and services

- Gorgeous Garden & splendidly laid-out Landscape.
- Tri-mix R.C.C. Internal Roads.
- Paved Jogging track.
- Car-pool facilities for schools.
- In-house Plumber and Electrician on call.

Note :

- The developer reserves the rights to change or revise or make any modifications, additions, omissions or alterations in the scheme as a whole or any part thereof or any details therein, at their sole discretion without any prior notice. Such changes would be binding to all the members.
- All the architectural and interior views in brochure are computer graphic simulated interpretation of the actual property.
- All the dimensions given are approximate & unfinished.
- This brochure is just for an easy presentation of the project and should not be treated as a legal document.
- Terms & Conditions apply